

Panel Light

User Manual



Guangzhou Mitek Light Co.,LTD

Email: info@miteklight.com

Website: www.miteklight.com

Add: No. 21 Dongfeng Avenue, Automobile Industry Base, Huadu District, Guangzhou

TECHNICAL PARAMETERS

Light source

Input power: AC100-240V, 50-60Hz

Input power: 200W

Light source: 1080 LED light sources

Lamp life: 50000h

Optical

Color temperature: Warm White +Cold White

Display: ≥ 95

Controls

Control panel: digital display

Effect

Dimming: 0-255, 0%-100% linear dimming, smooth and flicker-free

Construction

Protection level: IP20

Weight&Dimension

Product size: 530×135×315mm (L×W×H)

Product net weight: 6.7kg

SIZE DRAWING

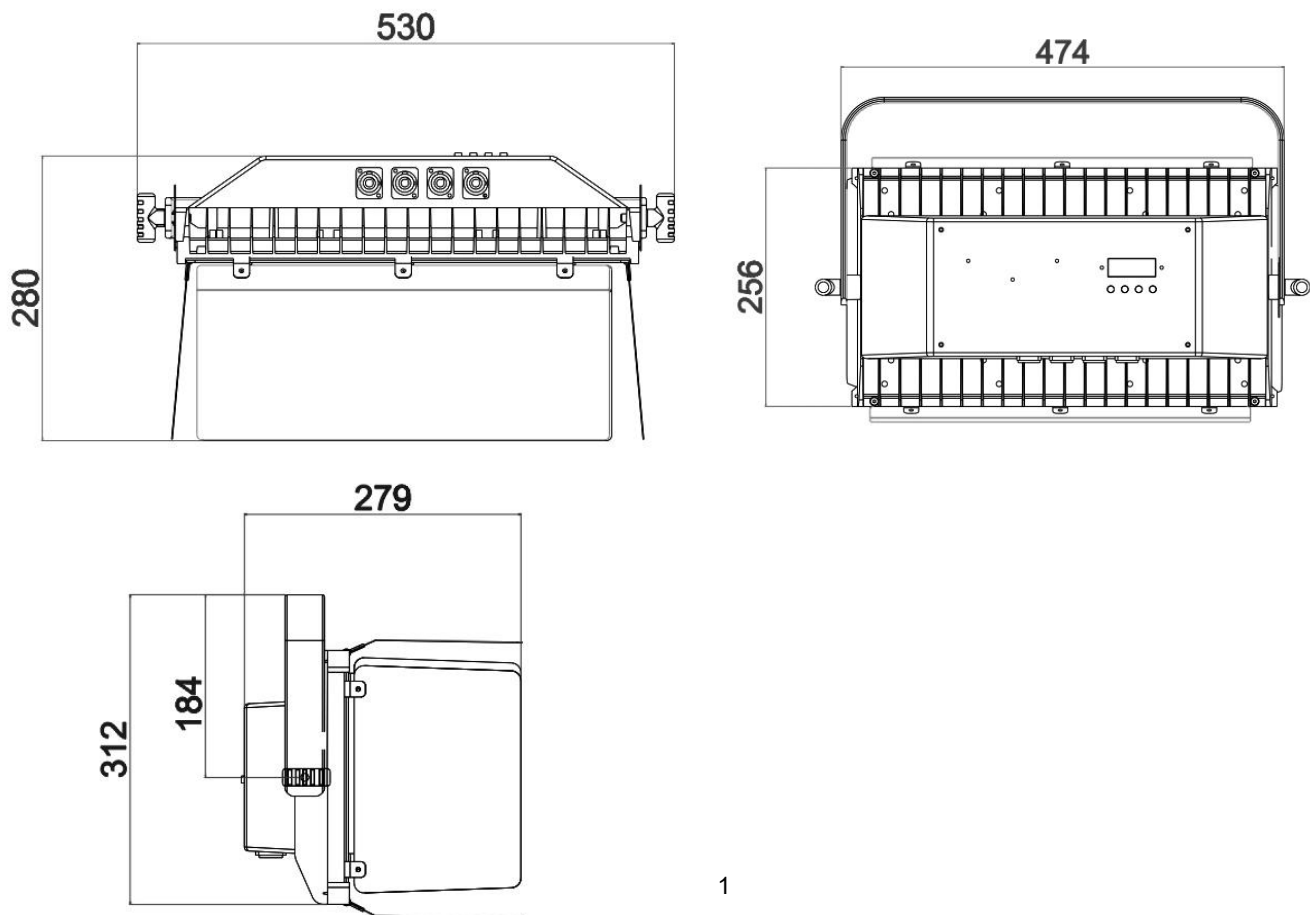
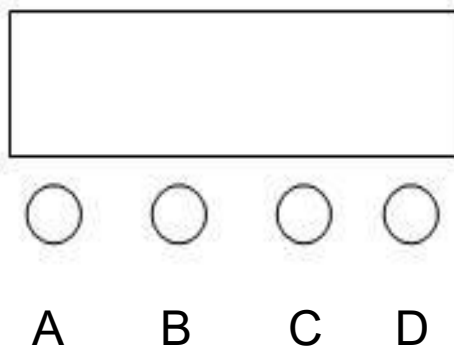


Diagram section:



- A. Function keys
- B. Add key
- C. Minus key
- D. Enter

Operation Instructions: Press function key A to cycle through different functions, press key B or C to modify the parameter value, and press key D to confirm.

Four-digit digital keypad operation instructions

NO	Menu	Menu Function	Illustrate
1	d001	DMX512Address code setting 001	Press the up and down keys to adjust the address code and press the OK key to save.
2	L000-L255	Button L dimming 0-255	Press the up and down keys to adjust the L brightness, and press the OK key to save.
3	H000-H255	Button H dimming 0-255	Press the up and down keys to adjust the H brightness, and press the OK key to save.
4	EP-0/1	Signal hold selection EP-1Keep, EP-0Not Keep	Press the up and down keys to select whether to keep the signal, and press the OK key to save.
5	DP-0/1	DP-1Black, screenDP-0Always on	Set whether to black screen.
6	DISP	Show inverted selection	Press the up and down keys to select normal display and reverse display.
7	T00C	Display current operating temperature	The working temperature of the lamp beads.

Channel Mode

NO	Function	Illustrate
Channel 1	Total dimming	(0-255) Overall dimming, linear dimming, from dark to bright
Channel 2	L dimming	(0-255) L dimming, linear dimming, from dark to bright
Channel 3	H dimming	(0-255) H dimming, linear dimming, from dark to bright

Channel 4	Strobe	(0-9) No effect
		(10-255) From slow to fast

In the address code state, after multiple machines are connected, if there is no console connected, the master-slave connection function can be realized, and one of the devices can be operated, and the other devices in the address d001 state will run the program synchronously with the host. After the console is connected, if the console signal is received, the d of the address code will become A, and the device in the address state can be controlled by the console.

REMARK

The product has perfect performance and integrity packing.

All users should be strictly comply with the warning and operating instructions as stated.

Or we aren 't in charge of any result by misusing.

Any damage resulting by misuse is not within the Company 's warranty.

Any fault or problem caused by neglecting the manual is also not in the charge of dealers.

Errors and omissions for every information given in this manual excepted.

All information is subject to change without prior notice.