

Mini W1940 IP

User Manual



Guangzhou Mitek Light Co.,LTD

Email: info@miteklight.com

Website: www.miteklight.com

Add: No. 21 Dongfeng Avenue, Automobile Industry Base, Huadu District, Guangzhou

TECHNICAL PARAMETERS

Light source

Input Voltage: 100V-240V, 50/60 Hz.

Power Consumption: 800 watts

Light Source: 19 40W RGBW 4-in-1 LEDs.

With Aperture: 80 5050 SMD LEDs

Lamp Lifespan: ≥50,000 hours

Optical

Focus Angle: 4°-60°. Smooth and quiet linear motor-driven zoom system.

Optical System: High-definition optical system with heat-resistant glass light guides and a fast, smooth motorized zoom system for uniform, soft tinting and color mixing effects.

Controls

Control Channels: 5 built-in channel modes: 14/25/30/54/58 channels.

Control Mode: DMX512, RDM, master-slave, voice-activated, or auto-operated.

Display: 1.8-inch TFT color LCD with touchscreen buttons, 4 function buttons, 180° flip LCD display, 60-second automatic screen-off, DMX signal indicator, and Chinese/English switching.

Effect

Color: RGBW infinitely mixed color for a uniform, smooth, and rich light spot.

Linear Dimming: 0-100% linear dimming with 6 built-in static and dynamic macro effects, adjustable speed.

High-Speed Strobe: 1-25 times/second high-speed LED dimming/strobe effects, adjustable speed, with presets for various, random, and dimming pulse strobe effects.

Construction

Exterior Material: Crafted from a high-end, nationally standardized lightweight die-cast aluminum housing. Made without plastic, it can withstand harsh outdoor conditions, including heavy rain, high altitudes, strong sandstorms, coastal areas, and extreme cold and heat.

Waterproof: Withstands 360° waves and impacts, achieving IP65 waterproof rating.

Horizontal scanning range: 540° (16-bit precision scanning)

Vertical scanning range: 270° (16-bit precision scanning)

Maximum number of connections: 220V: Up to 4 units, 2.5 square meters of cable required

20V: Up to 2 units, 2.5 square meters of cable required

Weight&Dimension

Product dimensions: 328*252*419mm

Net weight: 14kg

Carton packaging: 428*352*519cm

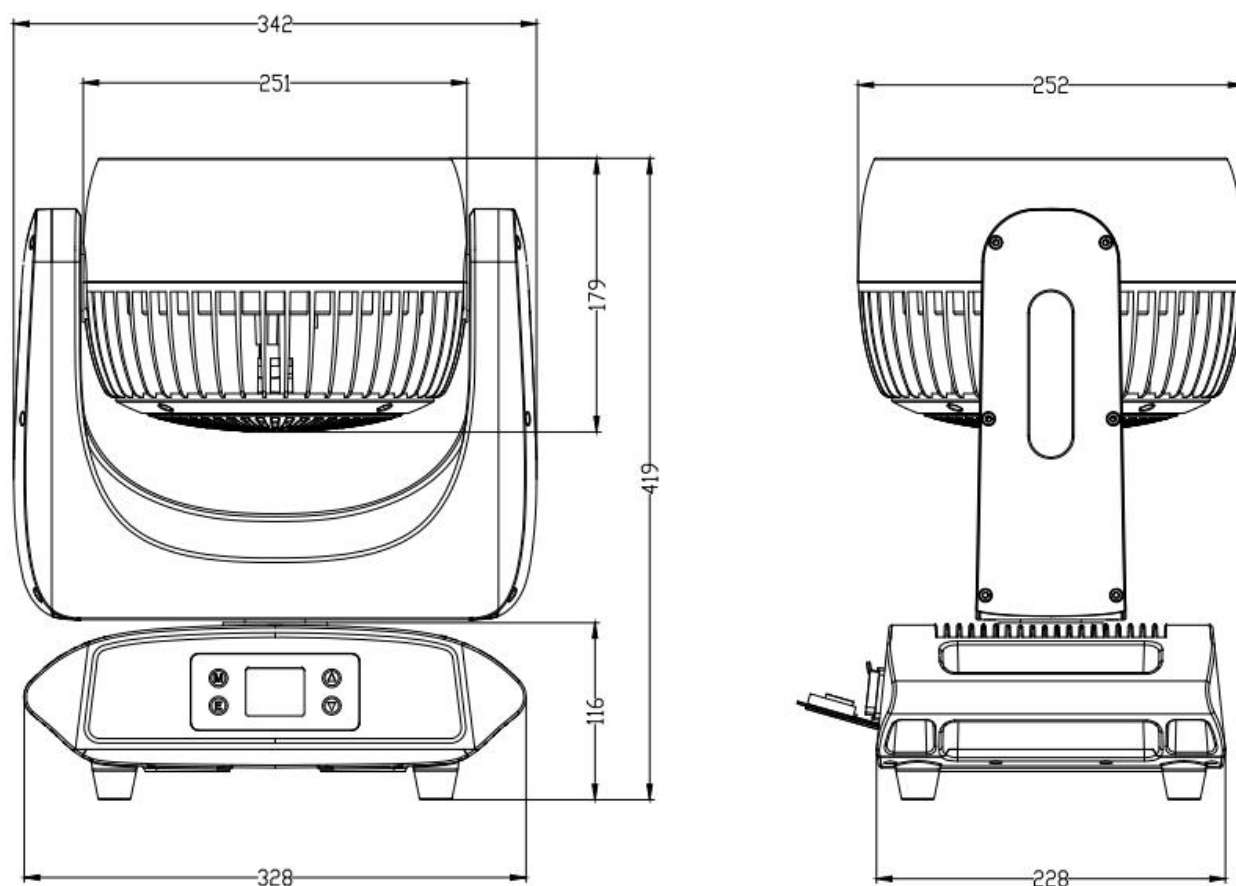
Gross weight: 16.5kg

Features

The mini moving head wash light is compact and lightweight, boasting powerful light output and energy-saving features. It combines powerful beam and wash functions. Its light source consists of 19 40W RGBW LEDs, creating a uniform color mixing system and rainbow effects. It effortlessly creates fast, powerful beams, adding a dynamic effect to the stage. Multiple

channel modes are available, and DMX and RDM control allows for point-by-point control, allowing the light to dance to the music. Lighting technicians can flexibly adjust colors, angles, and lighting effects. A linear focus system with a zoom angle of 3.5° to 50°, variable strobe speeds, and smooth dimming from 0° to 100° create a variety of dynamic and psychedelic lighting effects, fully adapting to diverse stage applications. Its compact design, fast speed, and silent operation create soft lighting that not only creates a wide range of stage effects but also creates a dreamy effect for stage performances, cultural tourism, and other events.

SIZE DRAWING



Effect



Remove the packaging

For correct and safe use of this product, please read the instructions carefully before installation and use. This instruction contains important installation and application information, and please strictly follow the instructions when installing and operating the product. At the same time, please keep this instruction properly.

The 19 focus adjustment is designed and produced in strict accordance with CE standards, in line with the international standard DMX512 signal protocol, can be used independently or online, with the characteristics of fast rotation, low noise and powerful function, suitable for small and medium-sized concerts, theaters, studios, nightclubs and bars, etc.

This product uses 19 bright and stable 40W 4-in-1 lamp beads. Please remove the package carefully, check whether the product is damaged during transportation after removing the package, and check whether the following contents are complete.

19 focus adjustment----1 unit signal line----1
Instruction manual----1 power cord-----1

19 focus adjustments----1 unit signal line----1
Instruction manual----1 power cord-----1

Safety instructions

pay attention to !

Please be careful before operating this product. This product is high voltage. If you touch the wire, you may be electrocuted!

This product is delivered in perfect condition. To maintain its integrity and ensure safe operation, users must strictly follow safety guidelines and the warnings in this manual. Important Notice: Any damage caused by failure to comply with these instructions will not be covered under warranty. The supplier assumes no liability for any resulting product issues. If the product has been exposed to extreme temperature fluctuations (e.g., after transportation), do not immediately connect the power supply. Moisture from temperature changes may cause damage. Always allow the product to reach normal operating temperature before use.

This product can be used in the voltage range of 90-240V, and is used indoors. Please ensure that the ground voltage is not higher than the range that the product can withstand!! The power plug must be inserted into a protective Class I socket. The green or tea-colored conductor must be grounded.

Please check the power cord regularly to ensure it is not folded, damaged or scratched, and is not connected to other wires! Special care should be taken when connecting the power cord or related wires. Always unplug the power cord before using the product or cleaning it.

Before using the product, please familiarize yourself with the operation function of the product. Do not let children or non-professionals touch the product.

Please do not shake this product. Do not use brute force when installing or operating the product. Do not let unprofessional personnel operate the product. Most of the damage is caused by unprofessional operation.

The product is not equipped with relevant maintenance parts. The maintenance and repair of the product can only be carried out by professionals!

Please do not change this product without authorization, otherwise the product may be damaged, and the damage caused is not covered by the warranty. In addition, non-professional operation may lead to short circuit, burn or electric shock, etc.

Operation instructions

--This product is a shaking dyeing beam lamp, used to create the effect of dyeing performance.

--If the product has been exposed to a large temperature difference (e.g., after transportation), do not start the product immediately, because thermal account cold shrinkage will damage the product. Wait until the equipment reaches normal room temperature before starting the product.

--Pay attention to earthquake protection. Avoid strong collision during installation of the product.

Do not lift the entire product through the lamp head, as this may damage the mechanical nature of the equipment.

When choosing the installation location, make sure that the product is not exposed to overheating, too wet or too dusty. Do not place any wires on the ground, otherwise there may be a risk of electric shock.

--Before installing the product, make sure that the installation point is safe

--Secure the product with a safety cord and check all screws for correct installation

Make sure the lens is in good condition. Replace the lens if it is damaged or scratched.

--It is recommended that the product be operated by technicians familiar with the product. Non-professionals are prohibited from operating this equipment, because many losses are caused by non-professional operation.

--Take good care of packaging materials for secondary transportation if necessary.

Do not change the product without the guidance of the manufacturer or distributor.

--Any equipment failure caused by not operating the equipment according to the instructions is not covered by the warranty. In addition, any accidents caused by short circuit, injury, electric shock, ultraviolet light, bulb explosion and other accidents are not covered by the warranty.

Product suspension and installation

Note: For safety reasons, please install this product in a place far away from the aisle, seating area, or within reach of the person

Before hanging this product, make sure that the installation point can bear 10 times the weight of this product.

Products must be installed with double protection, such as a safety rope.

Do not stand under the installation point when hanging, removing or repairing this product.

Ensure that the product is installed at least 0.5 meters away from flammable materials.

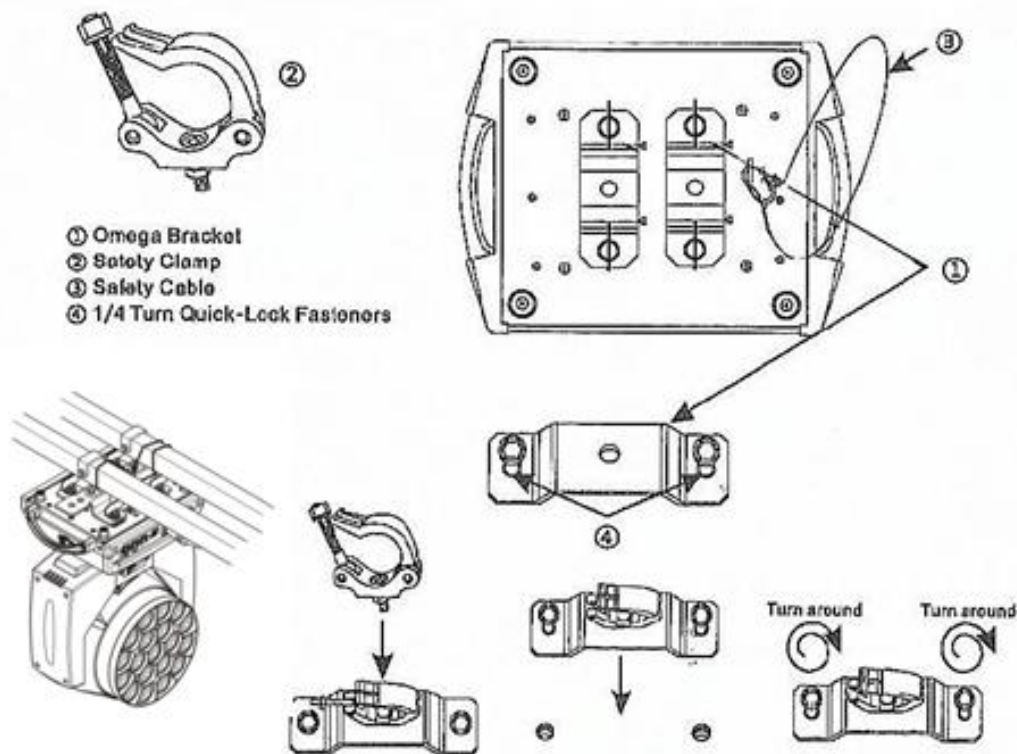
Please remember to use a safety rope as a safety guarantee in case of accidents when the fast lock is loosened.

Suspension: The top suspension requires experienced installation personnel, including calculation of load requirements, use of installation materials, periodic inspection of the safety status of installation materials and products. If you lack this knowledge, do not try to install by yourself. If the operation is not correct, it may lead to serious consequences such as personal injury.

Before powering on the product, make sure that all required hanging and installation steps have been completed.

Quick lock suspension: The bottom of this product has a special professional suspension part, including quick lock suspension part and safety rope suspension point (please refer to the figure below).

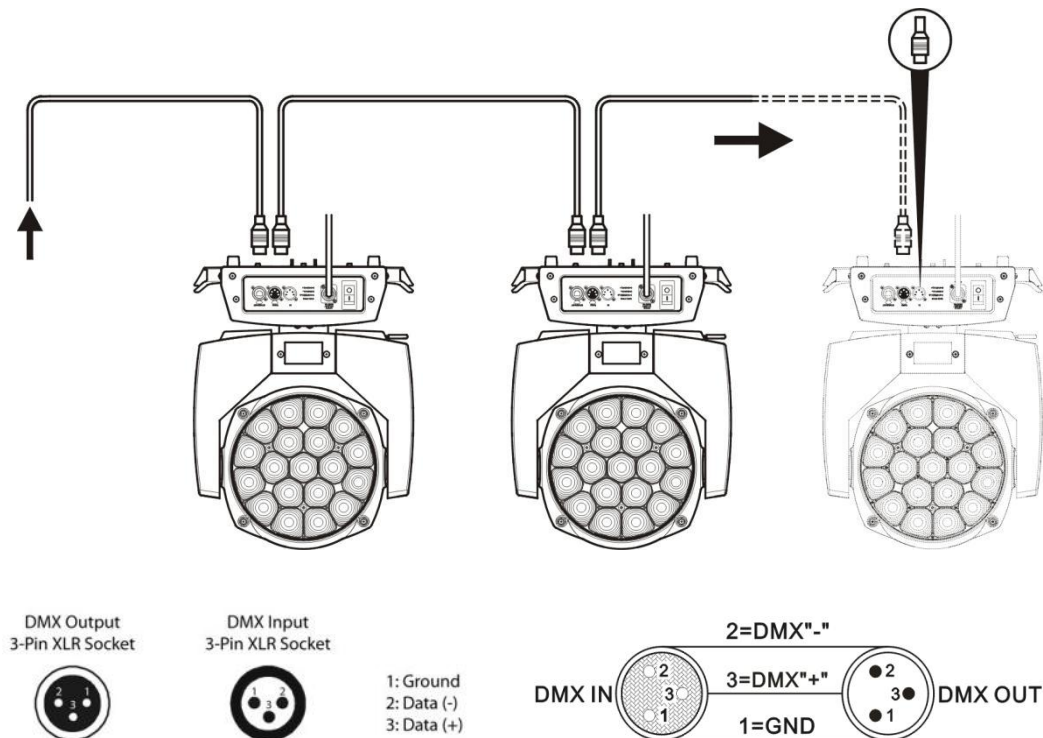
When hanging the product on the truss, please remember to use a suitable quick-release lock to fix it at the quick-release lock hanger position of the product, and use an M10 screw to hang it up. For further safety assurance, install the safety rope at the safety rope hanger point at the bottom of the product and fix it to the truss.



No matter which type of suspension you choose, be sure to use a safety cord. The bottom of the product has a special safety cord suspension point, please refer to the picture above, and be sure to use the special safety cord suspension point provided, do not install the safety cord at the handle position.

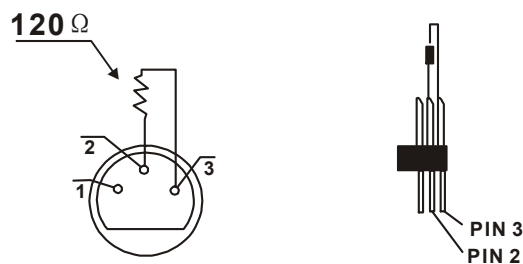
DMX-512 linkage

Connect the male XLR connector of this product's signal cable to the controller's output port, and the female connector to the signal input port on the back panel. You can connect multiple units in series. The required cables must be three-core shielded cables with XLR input/output connectors. Please refer to the diagram below for details.



DMX-512 connection requires a terminal (loop connection)

During installation, if the signal cables need to run long distances or in noisy environments like karaoke bars, it's recommended to use a DMX terminal (loop connection). This prevents digital control signals from being distorted by electrical noise. The DMX terminal consists of two XLR connectors with 2-pin and 3-pin configurations connected to a 120-ohm resistor. Insert the terminal into the XLR output port of the last device as shown in the diagram below.



Menu

main interface	description	explain
temperature	32℃	The temperature of the lamp plate is 32℃ Effect of temperature on power: Power reduction starts at 70 degrees; Power is increased only when the temperature is below 68 degrees (excluding 68 degrees); 68 to 69 degrees without power up or down; Turn off the lamp directly at 85 degrees.
	***℃	Temperature detection is abnormal
electric fan	whack	1) Turn the fan on for 15 seconds 2) The lamp board temperature is 48 degrees and the fan starts to turn, and it stops only when the temperature is lower than 45 degrees
	Keep turning	1) Temperature cannot be detected 2) Communication error
address	001 - 512	Each time the address code is added or subtracted by one
signal lamp	blue	DMX signal
	red	report an error

primary menu	Submenus	Level 3 menu/parameters
System Settings	running mode	DMX/voice control/self walk 1/self walk 2
	channel pattern	14CH/25CH/30CH/54CH/58CH
	Horizontal reversal	On/off
	Invert vertically	On/off
	Reserve function	
	Optical coupling error correction	On/off
	Signal retention	On/off
	Screen protection	On/off
	The screen flips	On/off
	Update in sync	On/off (This function should be operated offline after removing the DMX)
	language	centre /EN
	factory data reset	
manual mode	Manually control channel	000-255

	values	
system calibration	enter password	Light fixture calibration
system reset	Effect: Motor reset	Effect reset except XY
	Scan motor reset	Only the XY axis was reset
	All motors reset	Light fixture reset
system info	Reset the information	Display specific information
	DMX data detection	Displays specific DMX detection content
	sensor information	Display specific information of optocoupler and Hall
	Hardware version	Displays the hardware version number
	software release	Displays the software version number

System Settings

option	explain	
running mode	The lamp supports three modes: DMX mode, self-moving mode and sound control mode	
	DMX pattern	In console mode, it receives DMX signal and RDM signal
	Autonomous mode 1	The lamp runs automatically according to the built-in program 1
	Autonomous mode 2	The lamp runs automatically according to the built-in program 2
	Voice-activated mode	When the lamp detects a strong sound, the lamp automatically runs a scene according to the built-in program, otherwise it keeps the last scene
channel pattern	You can select the following channel values: 14CH/25CH/30CH/54CH/58CH	
Horizontal reversal	Set the rotation direction of the X axis	
	close	No reverse
	open	opposite direction
Invert vertically	Set the Y-axis rotation direction	
	close	No reverse
	open	opposite direction
Reserve function		
Optical coupling error	Check if XY is out of step and correct	
	close	Do not correct the position after a step loss

correction	open	Position is automatically corrected after a step loss
Signal retention	The output status of the lamp when there is no DMX signal	
	close	No signal, so the motor and light source return to the position and state when the reset is completed
	open	No signal, keep the last frame of DMX data output
Screen protection	Screen on time	
	close	Chang Liang
	open	In static environment, the screen is turned off at regular intervals
The screen flips	Set the display direction of the screen	
	close	Do not reverse display
	open	Reversed display
Update in sync	Sync the setting parameters or calibration parameters of multiple lamps	
	close	Sync updates are turned off.
	open	Use the DMX line to connect multiple lamps, and the information can be updated synchronously on the calibration interface. (Note: Please unplug the DMX signal line)
language	Switch between Chinese and English menus	
	centre	the Chinese language
	EN	English menu
factory data reset	The lamp parameters return to the factory setting	
	cancel	res sic stantibus
	affirm	The lamp is restored to factory Settings

◆ manual control

This interface is used to control the current lamp. See channel table for details.

Press the "OK" button to enter the editing state. Press the "Up" and "down" keys to change the channel value. Press "OK" again to save the modified value and exit the editing. Press "Exit" to do not save the modified value and directly exit the editing.

◆ system calibration

Set a password "8888" here to prevent non-professionals from misoperation. Press the "OK" key for password verification.

option	explain
Initial position calibration	After entering the sub-interface, you can adjust the reset position of the motor of X-axis, Y-axis, focus adjustment and rotation to compensate for the error in hardware installation. The adjustment range is 0~255, and 127 means no adjustment.
white balance CAL	The power of LED1-19 and the whole LED can be adjusted. The adjustment range is 0~255, and 255 means no adjustment.
calibration of power	The maximum power of the whole lamp can be adjusted, and the adjustment range is 0~255.200 means no adjustment.

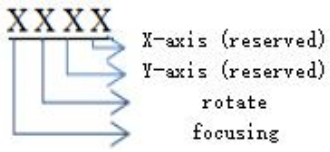

MIC sensitivity calibration	Adjust the sound control sensitivity.
change password	Set the system calibration password.

◆ reset

Press the "up" and "down" keys to switch the reset mode, and press "OK" to directly reset.

option	explain
Effect: Motor reset	Adjust the focus and rotate the motor to reset
Scan motor reset	Only the XY axis was reset
All motors reset	Light fixture reset

◆ system info

option	explain
Reboot error message	If the red ERR indicator light is on, it indicates that the lamp operation is wrong: 1) MCU1 communication failure (failure of communication between motor and display board) 2) MCU2 communication failure (communication failure between motor board and lamp board) 3) X/Y opto-coupler error 4) Failure of rotation and focus reset
DMX data monitoring	This enters the sub-interface, where the channel values are displayed numerically for viewing and can be turned to page
sensor information	<p>1) Hall:</p>  <p>2) sensor :</p> <p>X and Y optocouplers: XXXX--XXXX</p> 
Hardware version number	<p>Hardware information of the lamp</p> <p>XX . XX . XX</p> <p>↓ ↓ ↓</p> <p>Display board version. Motor version. Light board version</p>
Software version number	<p>Light fixture software version</p> <p>XX . XX . XX</p> <p>↓ ↓ ↓</p> <p>Display board version. Motor version. Light board version</p>

Channel tables

14CH	function	DMX numeric value	function
1	strobe flash		Blindfolded
		0-3	
		4-103	Sync flicker goes from slow to fast
		104-107	opening the light
		108-207	The frequency flash is divided from slow to fast
		208-212	opening the light
		213-225	Slow random frequency flicker
		226-238	Medium speed random strobe
		239-255	Fast random strobe
2	aiming	0-255	Linear dimming from dark to bright 0-100%
3	amplify	0-255	The focus range goes from large to small
4	X axle	0-255	horizontal control
5	X-axis fine-tuning	0-255	Level control fine-tuning
6	Y axle	0-255	vertical control
7	Y-axis fine-tuning	0-255	Vertical fine-tuning control
8	macro		NF
		0-25	
		26-76	The lamp head reset is effective for 5s
		77-127	XY reset 5s effective
9	Colorful	128-255	Full reset is effective for 5 seconds
			NF
		0-9	
		9-255	Colorful
10	red	0-255	The red is linearly dimmed from dark to bright 0-100%
11	green	0-255	The green color is dimmed linearly from dark to bright 0-100%
12	blue	0-255	The blue is linearly dimmed from dark to bright 0-100%

13	white	0-255	The white is linearly dimmed from dark to bright 0-100%
14	colour tempera ture	0-9	NF
		10-255	8000K-2500K

25CH	function	DMX numeric value	function
1	strobe/flash		Blindfolded
		0-3	
		4-103	Sync flicker goes from slow to fast
		104-107	opening the light
		108-207	The frequency flash is divided from slow to fast
		208-212	opening the light
		213-225	Slow random frequency flicker
		226-238	Medium speed random strobe
		239-255	Fast random strobe
2	aiming amplify	0-255	Linear dimming from dark to bright 0-100%
3		0-255	The focus range goes from large to small
4	X axle	0-255	horizontal control
5	X-axis fine-tuning	0-255	Level control fine-tuning
6	Y axle	0-255	vertical control
7	Y-axis fine-tuning	0-255	Vertical fine-tuning control
8	macro		NF
		0-25	
		26-76	The lamp head reset is effective for 5 seconds
		77-127	XY reset 5s effective
9	Colorful	128-255	Full reset is effective for 5 seconds
		0-9	NF

		9-255	Colorful
10	red	0-255	The red is linearly dimmed from dark to bright 0-100%
11	green	0-255	The green color is dimmed linearly from dark to bright 0-100%
12	blue	0-255	The blue is linearly dimmed from dark to bright 0-100%
13	white	0-255	The white is linearly dimmed from dark to bright 0-100%
14	colour temperature	0-9	NF
		10-255	8000K-2500K
15	effect	0-9	NF
		10-255	Effect 1-5 (one effect per 50 numbers)
16	Effect speed	0-63	The effect is static
		64-158	Go from fast to slow
		159-160	static
		161-255	Go from slow to fast in reverse
17	The effect fades	0-255	The effect runs from long to short
18	Halo strobe	0-4	NF
		5-250	The auxiliary light frequency flash goes from slow to fast
		251-255	NF
19	Halo auxiliary light dimming	0-255	Linear dimming from dark to bright 0-100%
20	The halo color is macroscopic	0-7	NF
		8-55	Color macro (8 numbers for one color)
21	The Halo Red	0-255	The halo red is linearly dimmed from dark to bright 0-100%
22	The halo is green	0-255	The halo green is linear dimming from dark to bright 0-100%

23	The halo is blue	0-255	The halo blue is linearly dimmed from dark to bright 0-100%
24	The halo effect	0-51	NF
		52-255	Effect 1-47 (one effect every four numbers)
25	Halo effect speed	0-255	The halo effect speeds up from slow to fast

30CH	function	DMX numeric value	function
1	stroboflash	0-3	Blindfolded
		4-103	Sync flicker goes from slow to fast
		104-107	opening the light
		108-207	The frequency flash is divided from slow to fast
		208-212	opening the light
		213-225	Slow random frequency flicker
		226-238	Medium speed random strobe
		239-255	Fast random strobe
2	aiming	0-255	Linear dimming from dark to bright 0-100%
3	Adjust the light fine-tuning	0-255	Linear dimming from dark to bright 0-1%
4	amplify	0-255	The focus range goes from large to small
5	X axle	0-255	horizontal control
6	X-axis fine-tuning	0-255	Level control fine-tuning
7	Y axle	0-255	vertical control
8	Y-axis fine-tuning	0-255	Vertical fine-tuning control
9	macro	0-25	NF
		26-76	The lamp head reset is effective for 5 seconds
		77-127	XY reset 5s effective
		128-255	Full reset is effective for 5 seconds
10	Colorful	0-9	NF
		9-255	Colorful
11	red	0-255	The red is linearly dimmed from dark to bright 0-100%
12	Red tweaks	0-255	The red is adjusted linearly from dark to bright by 0-1%
13	green	0-255	The green color is dimmed linearly from dark to bright 0-100%

14	Green tweaks	0-255	The green tone is adjusted from dark to bright with linear dimming of 0-1%
15	blue	0-255	The blue is linearly dimmed from dark to bright 0-100%
16	Blue fine-tuning	0-255	The blue is adjusted linearly from dark to bright by 0-1%
17	white	0-255	The white is linearly dimmed from dark to bright 0-100%
18	White tweaks	0-255	The white fine-tuning is linearly dimmed from dark to bright 0-1%
19	colour temperature	0-9	NF
		10-255	8000K-2500K
20	effect	0-9	NF
		10-255	Effect 1-5 (one effect per 50 numbers)
21	Effect speed	0-63	The effect is static
		64-158	Go from fast to slow
		159-160	static
		161-255	Go from slow to fast in reverse
22	The effect fades	0-255	The effect runs from long to short
23	Halo strobe	0-4	NF
		5-250	The auxiliary light frequency flash goes from slow to fast
		251-255	NF
24	Halo and auxiliary light dimming	0-255	Linear dimming from dark to bright 0-100%
25	The halo color is macroscopic	0-7	NF
		8-55	Color macro (8 numbers for one color)
26	The Halo Red	0-255	The halo red is linearly dimmed from dark to bright 0-100%
27	The halo is green	0-255	The halo green is linear dimming from dark to bright 0-100%
28	The halo is blue	0-255	The halo blue is linearly dimmed from dark to bright 0-100%
29	The halo effect	0-51	NF
		52-255	Effect 1-47 (one effect every four numbers)
30	Halo effect speed	0-255	The halo effect speeds up from slow to fast

54CH	function	DMX numeric value	function
1	stroboflash	0-3	Blindfolded
		4-103	Sync flicker goes from slow to fast

		104-107	opening the light
		108-207	The frequency flash is divided from slow to fast
		208-212	opening the light
		213-225	Slow random frequency flicker
		226-238	Medium speed random strobe
		239-255	Fast random strobe
2	aiming	0-255	Linear dimming from dark to bright 0-100%
3	Adjust the light fine-tuning	0-255	Linear dimming from dark to bright 0-1%
4	amplify	0-255	The focus range goes from large to small
5	X axle	0-255	horizontal control
6	X-axis fine-tuning	0-255	Level control fine-tuning
7	Y axle	0-255	vertical control
8	Y-axis fine-tuning	0-255	Vertical fine-tuning control
9	macro	0-25	NF
		26-76	The lamp head reset is effective for 5s
		77-127	XY reset 5s effective
		128-255	Full reset is effective for 5 seconds
10	Colorful	0-9	NF
		9-255	Colorful
11	red	0-255	The red color is linearly dimmed from dark to bright 0-100%
12	Red tweaks	0-255	The red is adjusted linearly from dark to bright by 0-1%
13	green	0-255	The green color is dimmed linearly from dark to bright 0-100%
14	Green tweaks	0-255	The green tone is adjusted from dark to bright with linear dimming of 0-1%
15	blue	0-255	The blue is linearly dimmed from dark to bright 0-100%
16	Blue fine-tuning	0-255	The blue is adjusted linearly from dark to bright by 0-1%

17	white	0-255	The white is linearly dimmed from dark to bright 0-100%
18	White tweaks	0-255	The white fine-tuning is linearly dimmed from dark to bright 0-1%
19	Red 1	0-255	Red 1 is linearly dimmed from dark to bright 0-100%
20	Red 1 tweak	0-255	Red 1 fine-tune from dark to bright with linear dimming of 0-1%
21	Green 1	0-255	Green 1 is linear dimming from dark to bright 0-100%
22	Green 1 tweak	0-255	Green 1 fine-tuning from dark to bright linear dimming 0-1%
23	Blue 1	0-255	Blue 1 is linearly dimmed from dark to bright 0-100%
24	Blue 1 tweak	0-255	Blue 1 fine-tune from dark to bright with linear dimming 0-1%
25	White 1	0-255	White 1 is linearly dimmed from dark to bright 0-100%
26	White 1 fine-tuning	0-255	White 1 fine-tune from dark to bright for linear dimming 0-1%
27	Red 2	0-255	Red 2 is linearly dimmed from dark to bright 0-100%
28	Red 2 tweaks	0-255	Red 2 fine-tune from dark to bright with linear dimming of 0-1%
29	Green 2	0-255	Green 2 is linearly dimmed from dark to bright 0-100%
30	Green 2 tweaks	0-255	Green 2 fine-tuning from dark to bright linear dimming 0-1%
31	Blue 2	0-255	Blue 2 is linearly dimmed from dark to bright 0-100%
32	Blue 2 tweaks	0-255	Blue 2 fine-tuning is a linear dimming from dark to bright 0-1%
33	White 2	0-255	White 2 is linearly dimmed from dark to bright 0-100%
34	White 2 tweaks	0-255	White 2 fine-tune from dark to bright with linear dimming 0-1%
35	Red 3	0-255	Red 3 is linearly dimmed from dark to bright 0-100%
36	Red 3 tweaks	0-255	Red 3 fine-tuning from dark to bright linear dimming 0-1%
37	Green 3	0-255	Green 3 is linear dimming from dark to bright 0-100%
38	Green 3 tweaks	0-255	Green 3 fine-tuning is a linear dimming from dark to bright 0-1%
39	Blue 3	0-255	Blue 3 is linearly dimmed from dark to bright 0-100%
40	Blue 3 tweaks	0-255	Blue 3 fine-tuning is a linear dimming from dark to bright 0-1%
41	White 3	0-255	White 3 is linearly dimmed from dark to bright 0-100%

42	White 3 tweaks	0-255	White 3 fine-tuning from dark to bright linear dimming 0-1%
43	colour temperature	0-9	NF
		10-255	8000K-2500K
44	effect	0-9	NF
		10-255	Effect 1-5 (one effect per 50 numbers)
45	Effect speed	0-63	The effect is static
		64-158	Go from fast to slow
		159-160	static
		161-255	Go from slow to fast in reverse
46	The effect fades	0-255	The effect runs from long to short
47	Halo strobe	0-4	NF
		5-250	The auxiliary light frequency flash goes from slow to fast
		251-255	NF
48	Halo and auxiliary light dimming	0-255	Linear dimming from dark to bright 0-100%
49	The halo color is macroscopic	0-7	NF
		8-55	Color macro (8 numbers for one color)
50	The halo is red	0-255	The halo red is linearly dimmed from dark to bright 0-100%
51	The halo is green	0-255	The halo green is linear dimming from dark to bright 0-100%
52	The halo is blue	0-255	The halo blue is linearly dimmed from dark to bright 0-100%
53	The halo effect	0-51	NF
		52-255	Effect 1-47 (one effect every four numbers)
54	Halo effect speed	0-255	The halo effect speeds up from slow to fast

58CH	function	DMX numeric value	function
1	strobe/flash	0-3	Blindfolded

		4-103	Sync flicker goes from slow to fast
		104-107	opening the light
		108-207	The frequency flash is divided from slow to fast
		208-212	opening the light
		213-225	Slow random frequency flicker
		226-238	Medium speed random strobe
		239-255	Fast random strobe
2	aiming	0-255	Linear dimming from dark to bright 0-100%
3	Adjust the light fine-tuning	0-255	Linear dimming from dark to bright 0-1%
4	amplify	0-255	The focus range goes from large to small
5	X axle	0-255	horizontal control
6	X-axis fine-tuning	0-255	Level control fine-tuning
7	Y axle	0-255	vertical control
8	Y-axis fine-tuning	0-255	Vertical fine-tuning control
9	macro	0-25	NF
		26-76	The lamp head reset is effective for 5 seconds
		77-127	XY reset 5s effective
		128-255	Full reset is effective for 5 seconds
10	Colorful	0-9	NF
		9-255	Colorful
11	red	0-255	The red is linearly dimmed from dark to bright 0-100%
12	Red tweaks	0-255	The red is adjusted linearly from dark to bright by 0-1%
13	green	0-255	The green color is dimmed linearly from dark to bright 0-100%
14	Green tweaks	0-255	The green tone is adjusted from dark to bright with linear dimming of 0-1%
15	blue	0-255	The blue is linearly dimmed from dark to bright 0-100%
16	Blue fine-tuning	0-255	The blue is adjusted linearly from dark to bright by 0-1%
17	white	0-255	The white is linearly dimmed from dark to bright 0-100%

18	White tweaks	0-255	The white fine-tuning is linearly dimmed from dark to bright 0-1%
19	Red 1	0-255	Red 1 is linearly dimmed from dark to bright 0-100%
20	Red 1 tweak	0-255	Red 1 fine-tune from dark to bright with linear dimming of 0-1%
21	Green 1	0-255	Green 1 is linear dimming from dark to bright 0-100%
22	Green 1 tweak	0-255	Green 1 fine-tuning from dark to bright linear dimming 0-1%
23	Blue 1	0-255	Blue 1 is linearly dimmed from dark to bright 0-100%
24	Blue 1 tweak	0-255	Blue 1 fine-tune from dark to bright with linear dimming of 0-1%
25	White 1	0-255	White 1 is linearly dimmed from dark to bright 0-100%
26	White 1 fine-tuning	0-255	White 1 fine-tune from dark to bright for linear dimming 0-1%
27	Red 2	0-255	Red 2 is linearly dimmed from dark to bright 0-100%
28	Red 2 tweaks	0-255	Red 2 fine-tune from dark to bright with linear dimming 0-1%
29	Green 2	0-255	Green 2 is linearly dimmed from dark to bright 0-100%
30	Green 2 tweaks	0-255	Green 2 fine-tuning from dark to bright linear dimming 0-1%
31	Blue 2	0-255	Blue 2 is linearly dimmed from dark to bright 0-100%
32	Blue 2 tweaks	0-255	Blue 2 fine-tuning is a linear dimming from dark to bright 0-1%
33	White 2	0-255	White 2 is linearly dimmed from dark to bright 0-100%
34	White 2 tweaks	0-255	White 2 fine-tune from dark to bright with linear dimming 0-1%
35	Red 3	0-255	Red 3 is linearly dimmed from dark to bright 0-100%
36	Red 3 tweaks	0-255	Red 3 fine-tuning from dark to bright linear dimming 0-1%
37	Green 3	0-255	Green 3 is linearly dimmed from dark to bright 0-100%
38	Green 3 tweaks	0-255	Green 3 fine-tuning is a linear dimming from dark to bright 0-1%
39	Blue 3	0-255	Blue 3 is linearly dimmed from dark to bright 0-100%
40	Blue 3 tweaks	0-255	Blue 3 fine-tuning is a linear dimming from dark to bright 0-1%
41	White 3	0-255	White 3 is linearly dimmed from dark to bright 0-100%
42	White 3 tweaks	0-255	White 3 fine-tuning from dark to bright linear dimming 0-1%
43	colour temperature		NF
		0-9	
		10-255	8000K-2500K

44	effect	0-9	NF
		10-255	Effect 1-5 (one effect per 50 numbers)
45	Effect speed	0-63	The effect is static
		64-158	Go from fast to slow in the right direction
		159-160	static
		161-255	Go from slow to fast in reverse
46	The effect fades	0-255	The effect runs from long to short
47	Background color: red	0-255	Effect Background Red is linearly dimmed from dark to bright 0-100%
48	The effect has a green background	0-255	Effect Background Green is adjusted linearly from dark to bright 0-100%
49	The effect has a blue background	0-255	Effect Background Blue is adjusted linearly from dark to bright 0-100%
50	Background effect white	0-255	Effect Background Linear dimming from dark to bright 0-100%
51	Halo strobe	0-4	NF
		5-250	The auxiliary light frequency flash goes from slow to fast
		251-255	NF
52	Halo and auxiliary light dimming	0-255	Linear dimming from dark to bright 0-100%
53	The halo color is macroscopic	0-7	NF
		8-55	Color macro (8 numbers for one color)
54	The halo is red	0-255	The halo red is linearly dimmed from dark to bright 0-100%
55	The halo is green	0-255	The halo green is linear dimming from dark to bright 0-100%
56	The halo is blue	0-255	The halo blue is linearly dimmed from dark to bright 0-100%
57	The halo effect	0-51	NF
		52-255	Effect 1-47 (one effect every four numbers)
58	Halo effect speed	0-255	The halo effect speeds up from slow to fast

Product maintenance and cleaning

Please pay attention to the following points when testing this product:

- 1.All screws and parts of the installed products must be tightly connected and not rusted.
- 2.The shell, lens, fasteners and installation locations (e.g., ceiling, suspension, truss, etc.) shall not be deformed.

3.The mechanical moving parts should not be worn and should not rotate unbalanced.

4.The power cord should not be damaged, material skin or scratches.

he installation and use of the products must be carried out by trained professionals to ensure that safety risks are eliminated.

Note: Please unplug the power cord before product maintenance!!

To maintain the good condition of the product and prolong its service life, we recommend regular cleaning of the product.

1. Clean the external lens and internal lens of the product every week to prevent the light output of the product from being weakened due to dust accumulation on the lens.

2. Clean the fan every week.

3. Every three months, professional electrical engineers will conduct detailed circuit inspection on the products to ensure good circuit contacts and prevent aging of circuit contacts caused by overheating.

We recommend that the product be cleaned regularly. Please be careful not to use wet or linen cloth, and never use alcohol or solvent for cleaning.

This product does not have replacement parts. Please refer to the "Installation Instructions" section.

If any spare parts are required, please purchase them from your local distributor.

REMARK

The product has perfect performance and integrity packing.

All users should be strictly comply with the warning and operating instructions as stated.

Or we aren't in charge of any result by misusing.

Any damage resulting by misuse is not within the Company's warranty.

Any fault or problem caused by neglecting the manual is also not in the charge of dealers.

Errors and omissions for every information given in this manual excepted.

All information is subject to change without prior notice.