

Mini Sharpy IP User Manual



Guangzhou Mitek Light Co.,LTD

Email: info@miteklight.com

Website: www.miteklight.com

Add: No. 21 Dongfeng Avenue, Automobile Industry Base, Huadu District, Guangzhou

TECHNICAL PARAMETERS

Light source

Input: AC100v-240V 50/60HZ

Power Consumption:400w

Light source: 360w Lamp

Life time:6000Hrs

Working temperature: -10-40℃

Optical

CTC: 8000K

Beam angle:0-1.7°

Controls

Control mode:DMX512, Master-slave,Auto,RDM

Channel:16ch

Display: LCD display with 5 buttons

Signal Data: 3pin XLR in/out/5pin XLR in/out

Power connector:TRUE1 Powercon in/out

Effect

Colors wheel :14 colors+white,With half color, flow effect.

Colorful wheel: one colorful wheel

Frost: 1frost wheel

Static gobos wheel :13gobos+white, shaking and bidirectional rotation.

Prism:Two prism wheel, prism wheel independently bi-rotate, can be overlap

Dimmer:0-100% linear dimmer

Strobe:1-20Hz fast strobe per second, with pulse strobe, synchronous and asynchronous strobe effects

Construction

Pan movement: 540° 16bit

Tilt movement: 270°16bit

Cooling fan: Silence fan, speed changeable

Body: Die-Aluminum+Plastic

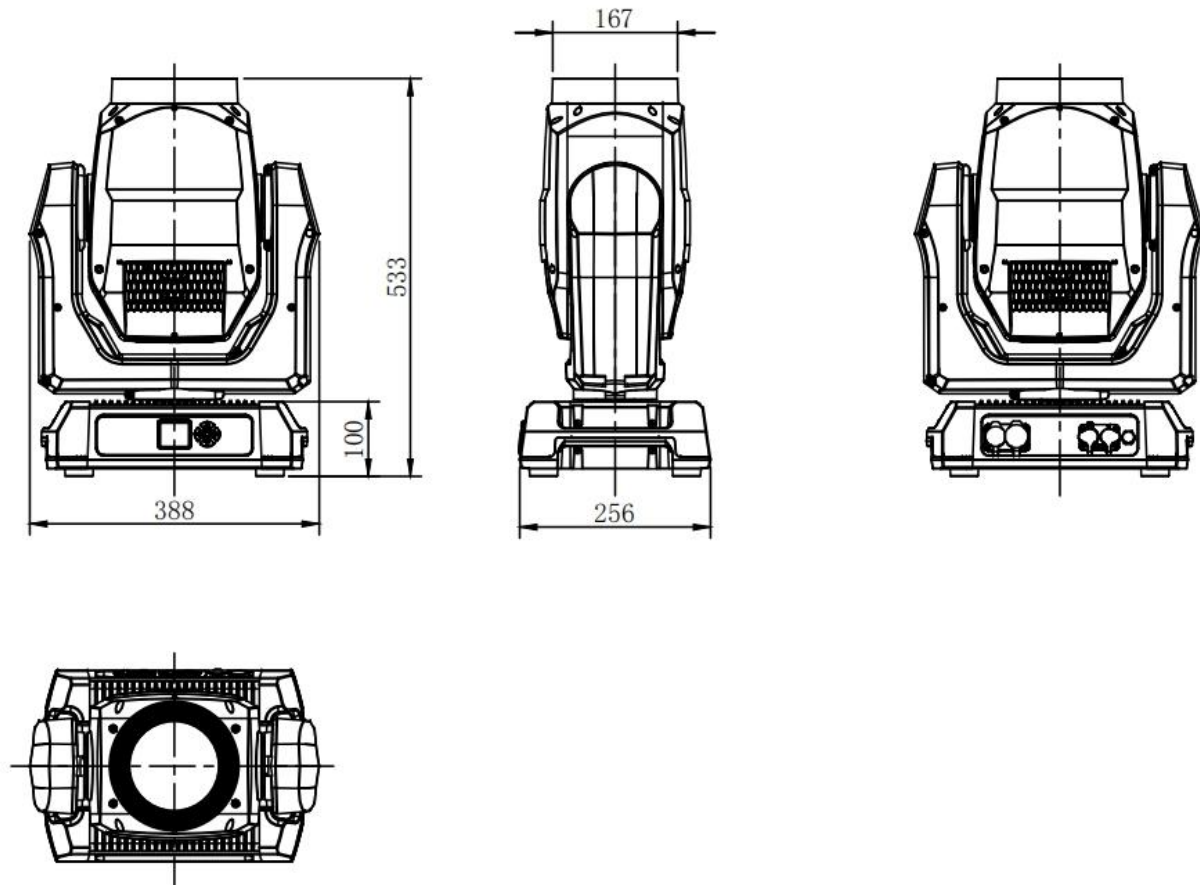
IP rate: IP65, waterproof

Weight&Dimension

Product size: 388*256*533mm

Net weight: 16.5kg

SIZE DRAWING



SECURITY TIPS

WARNING!!! To reduce the risk of fire, electric shock, or injury to persons, follow these important safety instructions:

- Non-professionals, not to disassemble the light arbitrarily and lighting accessories inside.
- Rated voltage range: AC110V-120V/60Hz or AC200V-240V / 50HZ (to be selected).
- Not beam irradiate the flammable materials, flammable materials and the lamp should be maintained at least 1M over the distance.
- Lamps used in ambient temperature: -15°C -40°C , the highest temperature of the surface of the lamp: 60°C .
- To keep away from the liquid substance and humid environment.
- Before using the lights must ensure the good grounding, can not install charging and remove any parts.
- The installation of lights, must be fixed screw fasteners with additional security cable and regular inspection.
- Lamps consecutive working hours is not recommended more than 10 hours.
- Should stop using the lights in time when happens unusual conditions during the process.

- Lamp parts of the rotation, external accessories and paste parts should be regular inspected, such as the emergence of loose and rock, should be reinforced in a timely manner to prevent the accident.
- Lamps adopt strong winds to refrigerate, it is easy to accumulate the dust, so you have to clean it weekly especially the cooling air opening, otherwise the dust will plug leading to poor light.

Board Instruction

ADDR	Chan	001-512
	Prev	Previous device
	Next	Next device
MODE	DMX_Ctrl	
	Auto_Run	
	Scene_mode	01-10, Auto
	Lamp_Ctrl	On/Off
	M/S Choose	Auto/Master/Slave
	Exit	
DISP	语言	English/中文
	Screen_Rot	Auto/Close/Open
	Screen_Saver	On/Off
	DMX_Indicate	Mode1-2
	Screen_Light	01-10
	Exit	
SCENE	Control Mode	On/Off
	Scene Select	01-10
	Scene Timer	xx:xs
	1.Color	000-255
	2. Strobe	000-255
	3. Dimmer	000-255
	4. Gobo	000-255
	5. Prism	000-255
	6. Prism.Ro	000-255
	7. Prism2.Ro	000-255
	8. Frost	000-255
	9. Focus	000-255
	10. Pan	000-255
	11. Pan fine	000-255
	12. Tilt	000-255
	13. Tilt fine	000-255
	14. XY speed	000-255
	15. Reset	000-255
	16. Lamp	000-255
	Exit	
SETUP	Pan Invert	On/Off
	Tilt Invert	On/Off
	Lamp On ST	On/Off
	P/T Rectify	On/Off
	Data Hold	On/off
	CH mode	16CH
	Pan Offset	128
	Tilt Offset	128
	Scene Timer	001
	Reset	On/Off

STATE	Factor Setting	On/Off
	Advance	Password: 1324
	Exit	
	Channl_info	
	Light_time	xxxx:xx
	Error_logging	
	Version	
	Fixture_Status	
	Use_Limit	
	Exit	

DMX CHANNEL SHEET

16CH	Function	DMX value	Description
1	Color wheel	0-9	White
		10-15	White+Color1
		16-20	Color1
		21-25	Color1+Color2
		26-30	Color2
		31-35	Color2+Color3
		36-40	Color3
		41-45	Color3+Color4
		46-50	Color4
		51-55	Color4+Color5
		56-60	Color5
		61-65	Color5+Color6
		66-70	Color6
		71-75	Color6+Color7
		76-80	Color7
		81-85	Color7+Color8
		86-90	Color8
		91-95	Color8+Color9
		96-100	Color9
		101-105	Color9+Color10
		106-110	Color10
		111-115	Color10+Color11
		116-120	Color11
		121-125	Color11+Color12
		126-130	Color12
		131-135	Color12+Color13
		136-140	Color13
		141-145	Color13+Color14
		146-149	Color14
		150-191	Rainbow effects forward from fast to slow
		192-255	Rainbow effects backward from slow to fast
2	Strobe	0-9	Close
		10-103	Strobe Effect1 from fast to slow
		104-107	Open
		108-207	Strobe Effect2 from slow to fast
		208-212	Close
		213-251	Strobe Effect3, from slow to fast
		252-255	Open
3	Dimmer	0-255	0-100% dimmer
4	Gobo wheel	0-4	open
		5-9	Gobo1

		10-14	Gobo2
		15-19	Gobo3
		20-24	Gobo4
		25-29	Gobo5
		30-34	Gobo6
		35-39	Gobo7
		40-44	Gobo8
		45-49	Gobo9
		50-54	Gobo10
		55-59	Gobo11
		60-64	Gobo12
		65-69	Gobo13
		70-128	Gobo forward change from fast to slow
		129-190	Gobo backward change from slow to fast
		191-195	Gobo1 shake from slow to fast
		196-200	Gobo2 shake from slow to fast
		201-206	Gobo3 shake from slow to fast
		207-211	Gobo4 shake from slow to fast
		212-216	Gobo5 shake from slow to fast
		217-222	Gobo6 shake from slow to fast
		223-227	Gobo7 shake from slow to fast
		228-232	Gobo8 shake from slow to fast
		233-238	Gobo9 shake from slow to fast
		239-243	Gobo10 shake from slow to fast
		244-248	Gobo11 shake from slow to fast
		249-255	Gobo12 shake from slow to fast
5	Prism	0-127	No function
		128-163	Prism1
		164-191	Prism2
		192-255	Prism1+Prism2
6	Prism Rotation	0-127	Prism Index
		128-191	Anticlockwise from fast to slow
		192-255	Clockwise from slow to fast
7	Reserve		
8	Colorful wheel/Frost	0-63	No Function
		64-127	Frost
		128-255	Colorful wheel
9	Focus	0-255	
10	Pan	0-255	Pan Movement 0-540degree
11	Pan fine	0-255	Pan fine
12	Tilt	0-255	Tilt Movement 0-270degree
13	Tilt fine	0-255	Tilt Fine
14	Pan, Tilt Speed	0-255	Pan, Tilt movement speed from fast to slow
15	Reset	0-128	No function
		129-255	Reset
16	Lamp	0-24	No function
		25-99	Lamp off
		100-255	Lamp on

FIXED EQUIPMENT

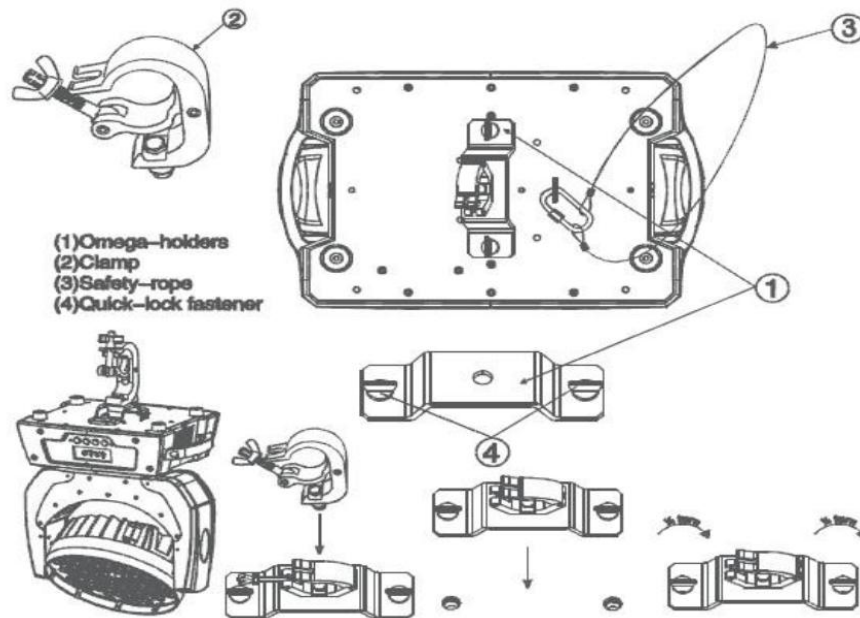
Please keep the equipment far away from the flammable objects like finishing material, etc. keep at least 0.5m distance from the flammable objects.

Warning: using two lamp clamps fix the equipment on the bottom of the lamp holder according to the instruction. to make sure the place of install the lamp is safe and suitable ,and the installation point that have chosen is safety and reliable.

The place of installing the lamp must support the 10 times weight of the lamp itself. And test the pensile place and make sure the place isn't out of the shape.

Must install the second protection when fixing the equipment like proper protective screening. The second protection is used to prevent drop off and lost of lamp and components.

Lamps can directly install the lamp holder , which is shown in the figure:



MAIN MACHINE CONNECTION

Please checking the power equipment supported.

Please put the plug of power source wire connect with the main power source .

(EU)Wire	Wire(America)	Direction of wire	General marks
Brown	Black	Live	L
Light blue	White	Neutral	N
Yellow/Green	Green	Earth	⏏

REMARK

The product has perfect performance and integrity packing.

All users should be strictly comply with the warning and operating instructions as stated.

Or we aren 't in charge of any result by misusing.

Any damage resulting by misuse is not within the Company 's warranty.

Any fault or problem caused by neglecting the manual is also not in the charge of dealers.

Errors and omissions for every information given in this manual excepted.

All information is subject to change without prior notice.